

Sierra Pacific Clad Awning

With architecturally sculpted lines, wide and narrow sash, hidden locking system, and large operating sizes, the Sierra Pacific Clad Awning combines the best features, style, and performance expected in a premium clad awning window.

MINIMUM / MAXIMUM FRAME SIZES

Custom sizing available in 1/16" increments. Additional sizes may be available upon approval.

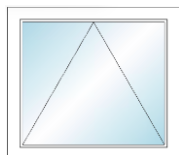
OPERATING		FIXED/PICTURE	
Minimum Frame Width	16.5"	Minimum Frame Width	14"
Minimum Frame Height	16"	Minimum Frame Height	14"
Maximum Frame Width	72"	Maximum Frame Width	120"
Maximum Frame Height	60"	Maximum Frame Height	120"
		Maximum Square Feet	56



Standard Construction:

- 0.0625" thick extruded aluminum exterior.
- Clad frame is extruded with integral nail fin, mechanically fastened, and corners sealed.
- 5-3/4" overall frame depth with standard 4-9/16" jamb depth.
- 2-1/4" sash thickness, with narrow 1-3/4" stiles and top rail, and 2-7/16" bottom rail. Optional wide sash with 2-11/16" stiles and rails.
- Continuous perimeter closed cell foam frame weatherstrip. Perimeter rigid cap, hollow bulb leaf sash weatherstrip.
- Exclusive hidden locking system. Truth Encore operators and standard 'Attraction' magnetic handle and cover.
- Standard interior removable FlexScreen.

Performance Data:

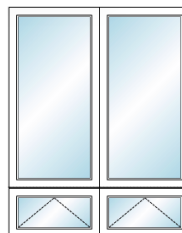


Operating Awning: 60" x 60"

AIR INFILTRATION.....<0.01/0.01/A3
WATER.....NO LEAKAGE @ 7.52 PSF
STRUCTURAL.....CW-PG50

Operating Awning: 72" x 36"

AIR INFILTRATION.....<0.01/0.01/A3
WATER.....NO LEAKAGE @ 7.52 PSF
STRUCTURAL.....CW-PG50



Mulled Awning / Picture: 96" x 108-1/4"

(Horizontal 1/4" plate mull and mull installation straps)

AIR INFILTRATION.....<0.01/0.01/A3
WATER.....NO LEAKAGE @ 7.52 PSF
STRUCTURAL.....CW-PG50

For a comprehensive list of tested and rated sizes and configurations, please refer to the Sierra Pacific Clad Awning Product Performance Guide (Structural) located in the Sierra Pacific Clad Awning Architectural Design Manual (ADM) on our website.

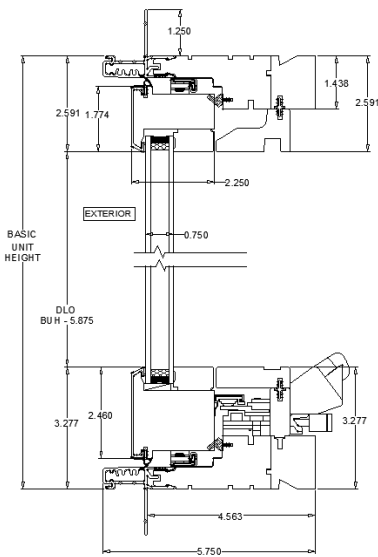
Thermal Performance (NFRC):

Air Filled			Argon Filled		
Low-E 272 Clear	Low-E 366 Clear	Triple IG (LE272/CLR/LE272)	Low-E 272 Clear	Low-E 366 Clear	Triple IG (LE272/CLR/LE272)
U-FACTOR.....0.29	U-FACTOR.....0.29	U-FACTOR.....0.19	U-FACTOR.....0.26	U-FACTOR.....0.26	U-FACTOR.....0.17
SHGC.....0.26	SHGC.....0.18	SHGC.....0.22	SHGC.....0.26	SHGC.....0.17	SHGC.....0.22
VT.....0.45	VT.....0.40	VT.....0.36	VT.....0.45	VT.....0.40	VT.....0.36
CR.....55	CR.....55	CR.....71	CR.....59	CR.....59	CR.....74

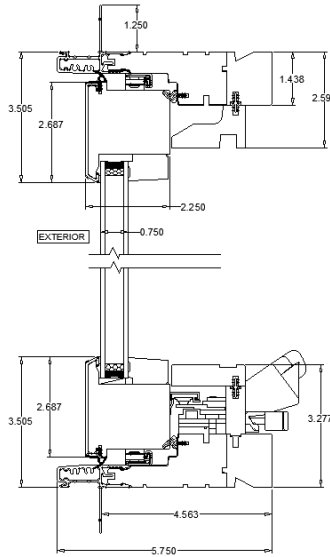
All values represent operating units with wide sash and insulated glass using standard black warm edge spacer. Additional glazing options available.

For a comprehensive list of glazing configurations, please refer to the Sierra Pacific Clad Awning Product Performance Guide (NFRC) located in the Sierra Pacific Clad Awning Architectural Design Manual (ADM) on our website.

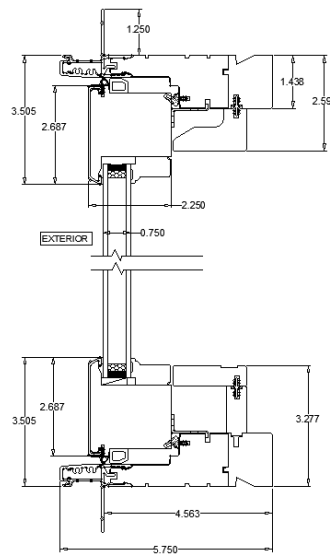
VERTICAL SECTION – OPERATING
Narrow Sash



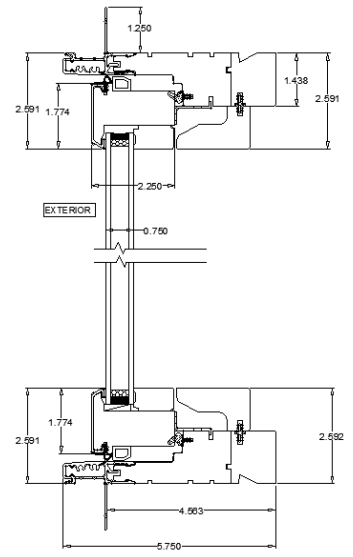
VERTICAL SECTION – OPERATING
Wide Sash – Contemporary Bead



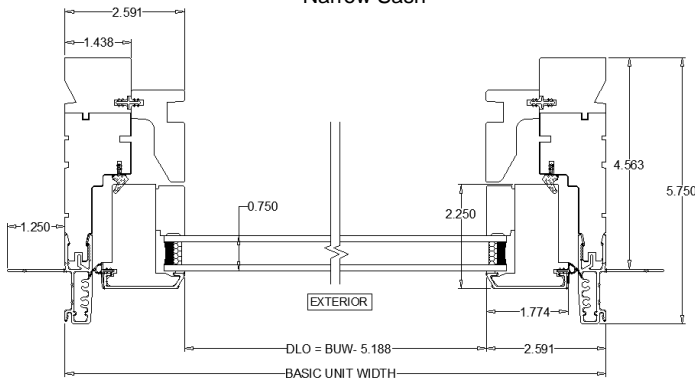
VERTICAL SECTION – PICTURE
Wide Sash – Traditional Bead



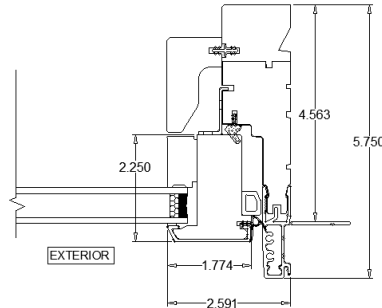
VERTICAL SECTION – TRANSOM
Narrow Sash



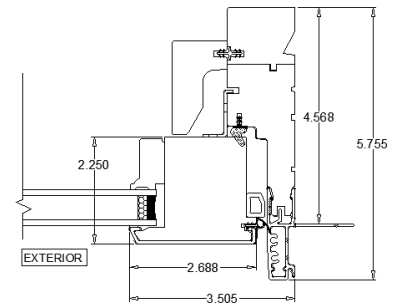
HORIZONTAL SECTION – OPERATING
Narrow Sash



HORIZONTAL SECTION – PICTURE
Narrow Sash



HORIZONTAL SECTION – TRANSOM
Wide Sash – Traditional Bead



Additional product details may be found on our website www.sierrapacificwindows.com/ProfessionalResources/TechnicalLibrary

Additional Features

- Baked on, electrostatically applied powder coat finish with virtually no VOC's, in four design collections that meet AAMA 2605 and AAMA 2604 specifications.
- Grille options include Simulated Divided Lite and Grille Between the Glass.
- Optional retractable screens
- Factory applied black or white primed interior, Ultra Coat painted interior, or Ultra Stain interior.
- Factory or field applied exterior trim options.

*Place Business Card or
Company Information Here*



Truth Attraction™ Handle and Cover

Zinc die cast handle and cover is available in 10 finishes and is designed with concealed magnets drawing the handle into proper placement.